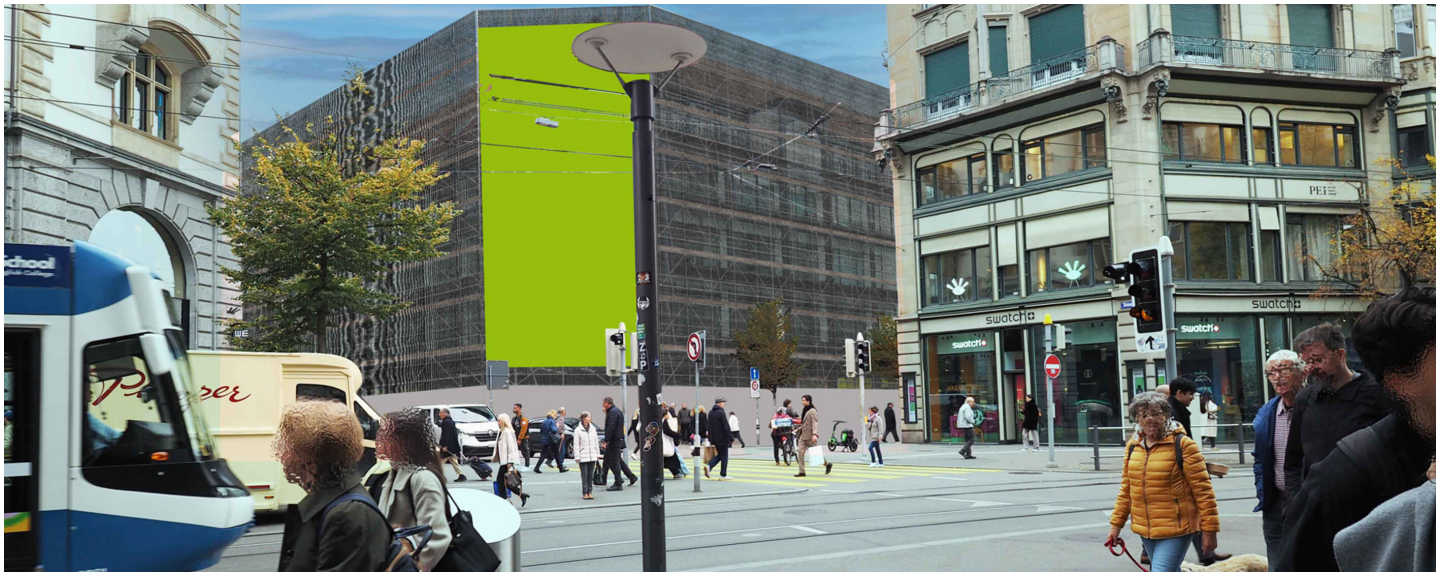


ZURICH, JELMOLI, SURFACE 2, BAHNHOFSTRASSE / CORNER SEIDENGASSE

Bahnhofstrasse 8001



FACTS AND FIGURES

Dimensions	ca. W 6.00 m x H 12.00 m
Total size	ca. 72.00 m2
Availability	ca. 16/06/2025 till 01/08/2027
Illumination	Not available
Frequency per month	ca. 2'346'280
Visibility	Front, sideways/oblique

LOCATION | DESCRIPTION

- Jelmolli-building, entry Bahnhofstrasse
- Directly in the city of Zurich / shopping, promenade and nightlife area
- Frontal view for the traffic, frontal view for pedestrians
- Directly at Bahnhofstrasse with a lot of exclusive shops
- High traffic and pedestrian volume
- Strong public transport from Bahnhofstrasse to Paradeplatz
- In the radius of 300m are a lot of banks based

PERMISSION

- Outline approval existing, individual artwork requires authorization

RESTRICTIONS

- One simple visual, containing straight forward details, max. 3 words + logo + web url.
- No advertising in the sectors of religion, tobacco, politics, alcoholic beverages and sex.
- No advertising for property companies. Competitors to tenants of the property on request.



SITUATION PLAN

[Google Map](#)

Bahnhofstrasse 8001