

# ZURICH, URANIASTRASSE 6, ECKE LINTHESCHERGASSE

## Uraniastrasse 6



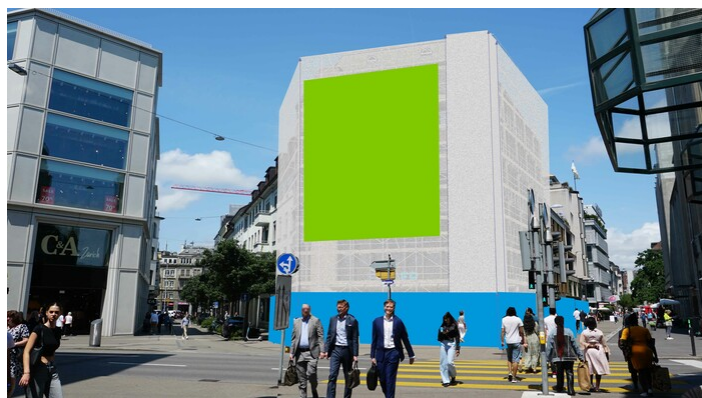
| FACTS AND FIGURES   |                            |
|---------------------|----------------------------|
| Dimensions          | W 10.00 m x H 10.00 m      |
| Total size          | 100.00 m2                  |
| Availability        | 02/12/2024 till 30/11/2025 |
| Illumination        | Not available              |
| Frequency per month | ca. 1'883'000              |
| Visibility          | Front, sideways/oblique    |

| LOCATION   DESCRIPTION  |  |
|---|--|
| ■ In the heart of Zurich  |  |
| ■ In the city center of Zurich/famous shopping, promenade and nightlife area                              |  |
| ■ Directly next to the Jelmoli and C&A building, short distance to Globus                                 |  |
| ■ Oblique view for the traffic, frontal view for pedestrians  |  |
| ■ 50 meters away from Bahnhofstrasse, instant sight after the turn from Bahnhofstrasse into Uraniastrasse |  |
| ■ Main connection street from the city to Sihlporte, Casino Zurich, distributor road                      |  |
| ■ Highway Chur and Bern/Basel   |  |
| ■ Access road to Pelikanplatz   |  |
| ■ High traffic and pedestrian volume  |  |
| ■ In the radius of 300m are a lot of banks based  |  |

| PERMISSION   |  |
|--|--|
| ■ Outline approval existing, individual artwork requires authorization |  |

| RESTRICTIONS  |  |
|---|--|
| ■ One simple visual, containing straight forward details, max. 3 words + logo + web url |  |

- No advertising in the sectors of religion, tobacco, politics and alcoholic beverages.
- Advertisement for banks and finances on request



## SITUATION PLAN

[Google Map](#)

Uraniastrasse 6